

# Fall Brook Building Committee



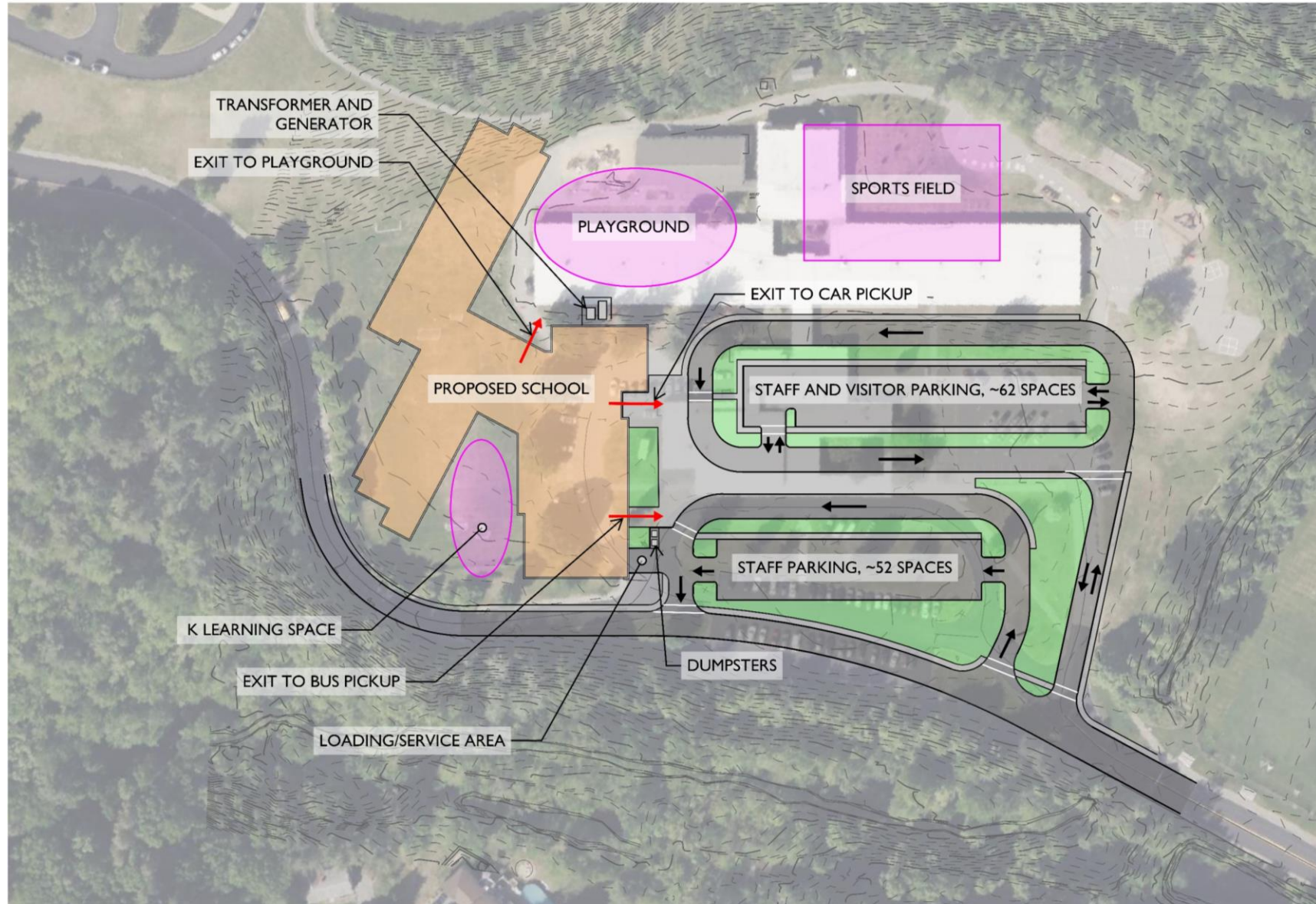
• Meeting #13  
06/11/2024



# Fall Brook Elementary School Working Group Agenda

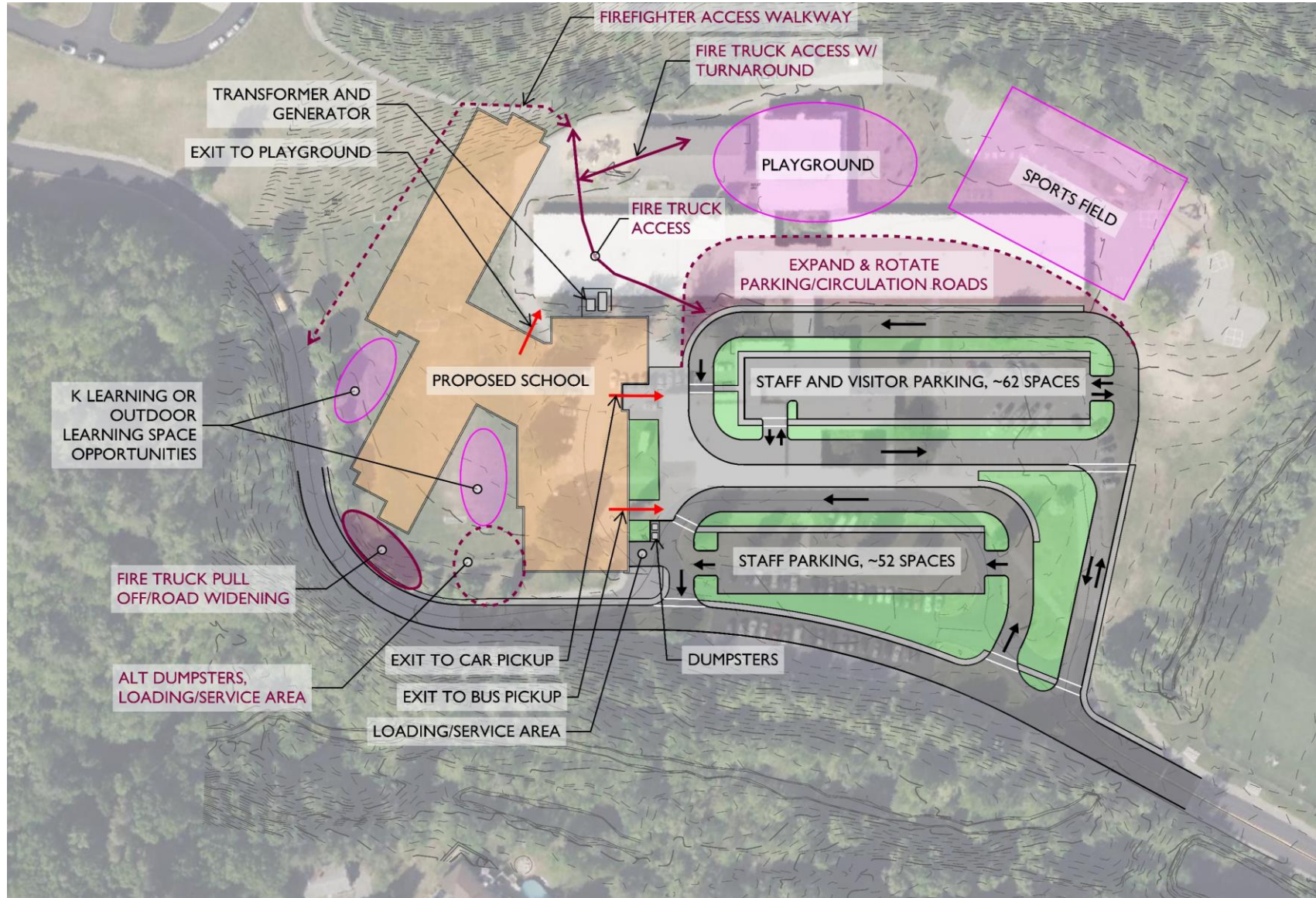
- Preliminary Site Design Review
- Outcomes of recent Design Meetings
- Pending site investigation

# Preliminary Site Design for N1



- Separate loops for car vs busses and parking separate from the traffic loop
- Exit for bus loop to be included
- Outdoor learning locations, dumpster locations, and electrical equipment will vary with all the options.
- Playground will be easy to access from school
- Sports field will remain same size as existing

# Preliminary Site Design for N1 with notes



- Updates based on our meetings in the last month
- Met with the Fire Department Chief to review site access
- Met with the working group

# Outcomes of Recent Design Meetings

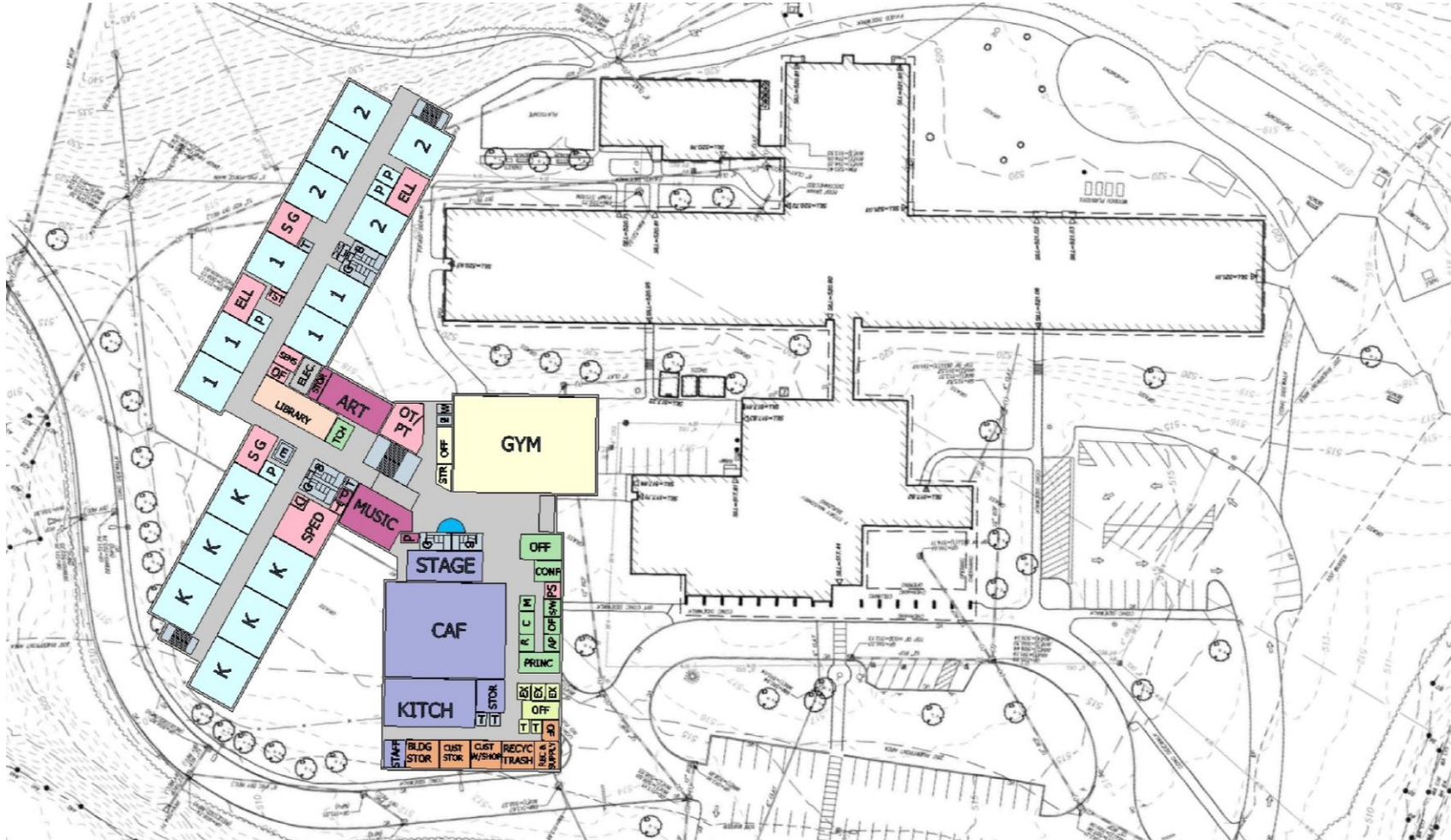
- Had two Working Group Meetings since last FBBC Meeting
- Had 9 separate meetings on June 6, 2024 to solicit feedback from all the educators at Fall Brook

## Working Group Feedback

- Most preferred Option N1, but liked the location of the cafeteria and the gym in Option N2 better
- Option N4, the three-story scheme does not align with the educational program and goals of Fall Brook Elementary
- Superintendent and others were concerned about having a three-story scheme from the security standpoint and kids with complex disabilities
- Quick and direct access to playground and fields for recessed is important to reduce transition time for students
- Student traffic for all shared spaces within the school should be considered for all layouts
- Desire to keep lower grades together
- Having shared activities in the center of the school is desirable, including the Media Center on the second floor.

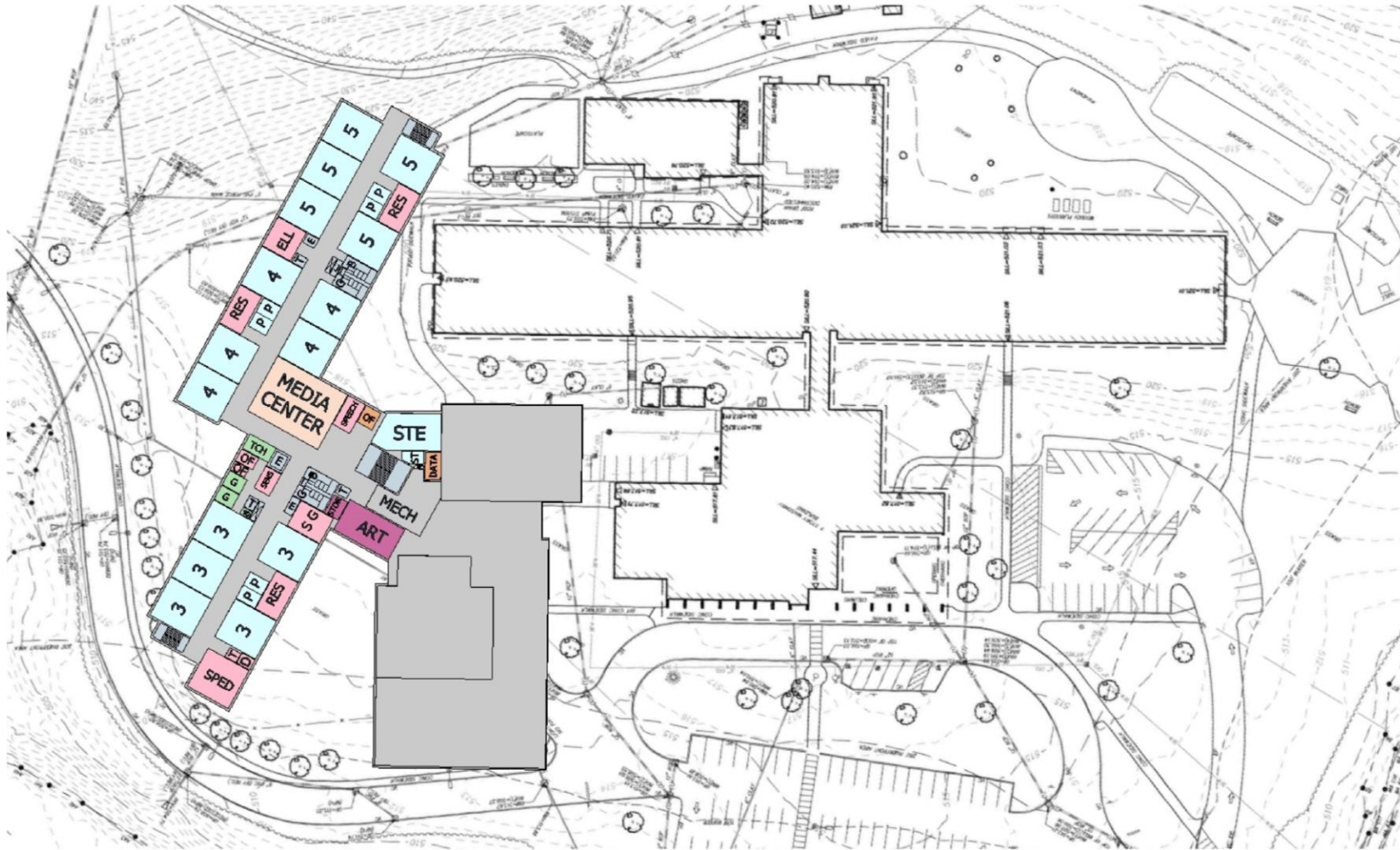


# Option N1- Staff and Working Group Feedback



- This is the preferred option for most groups
- Some educators prefer swapping the location of the gym and the cafeteria.
- Music room behind stage is desirable to connect them for performances
- Pull out spaces- consensus not reached, but some preferred larger space
- Teachers liked that the classrooms are going to be larger than the existing school

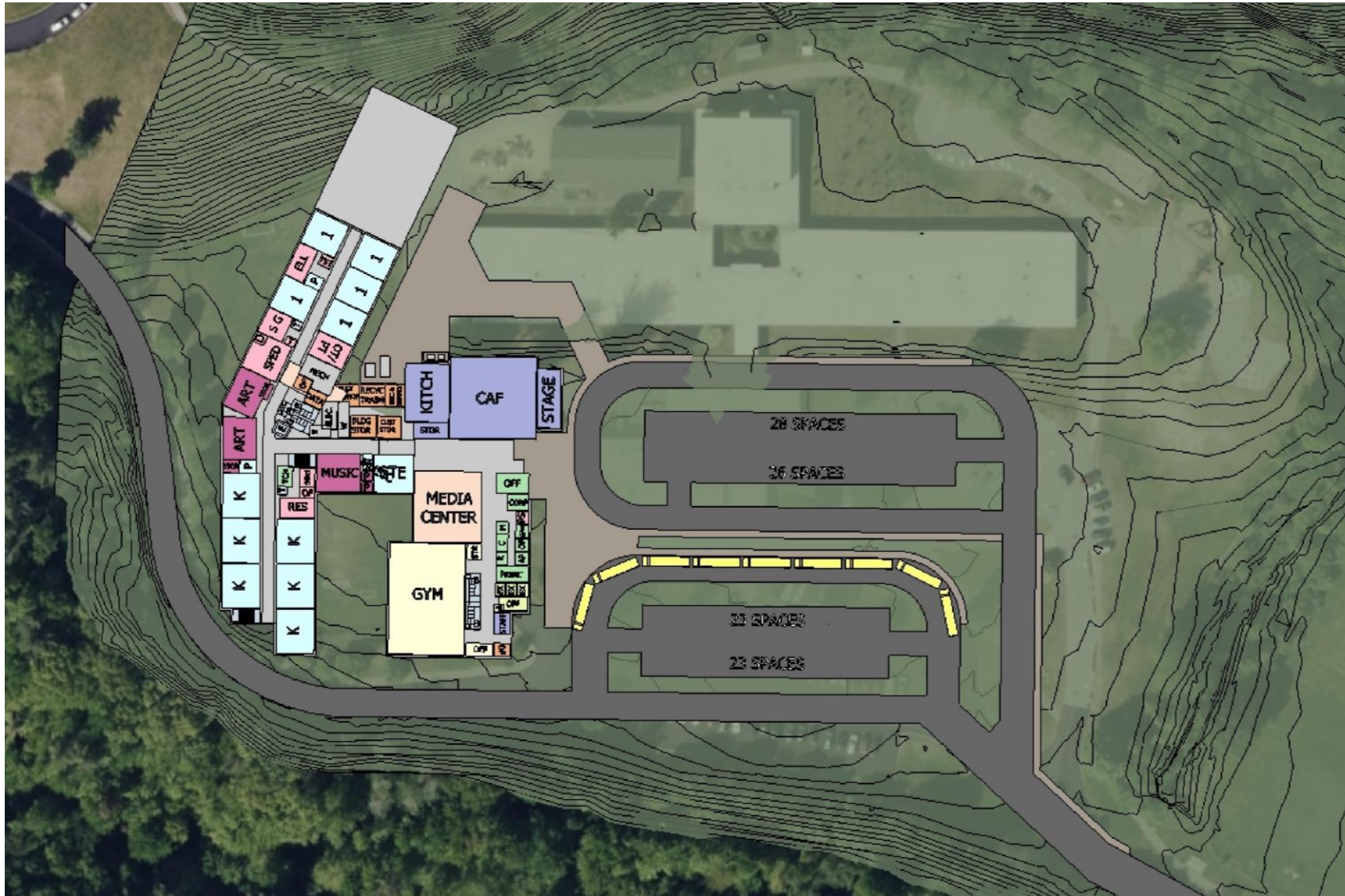
# Option N1- Staff and Working Group Feedback



- Having grades 3-5 on the second floor was the most desirable
- Guidance Office suite on the second floor for visibility
- Media Center location was discussed for first floor vs. second floor
- STEM room adjacent to Media Center preferred
- Speech to be located near classrooms and away from noise and large shared spaces

Option N1- Second Floor Plan

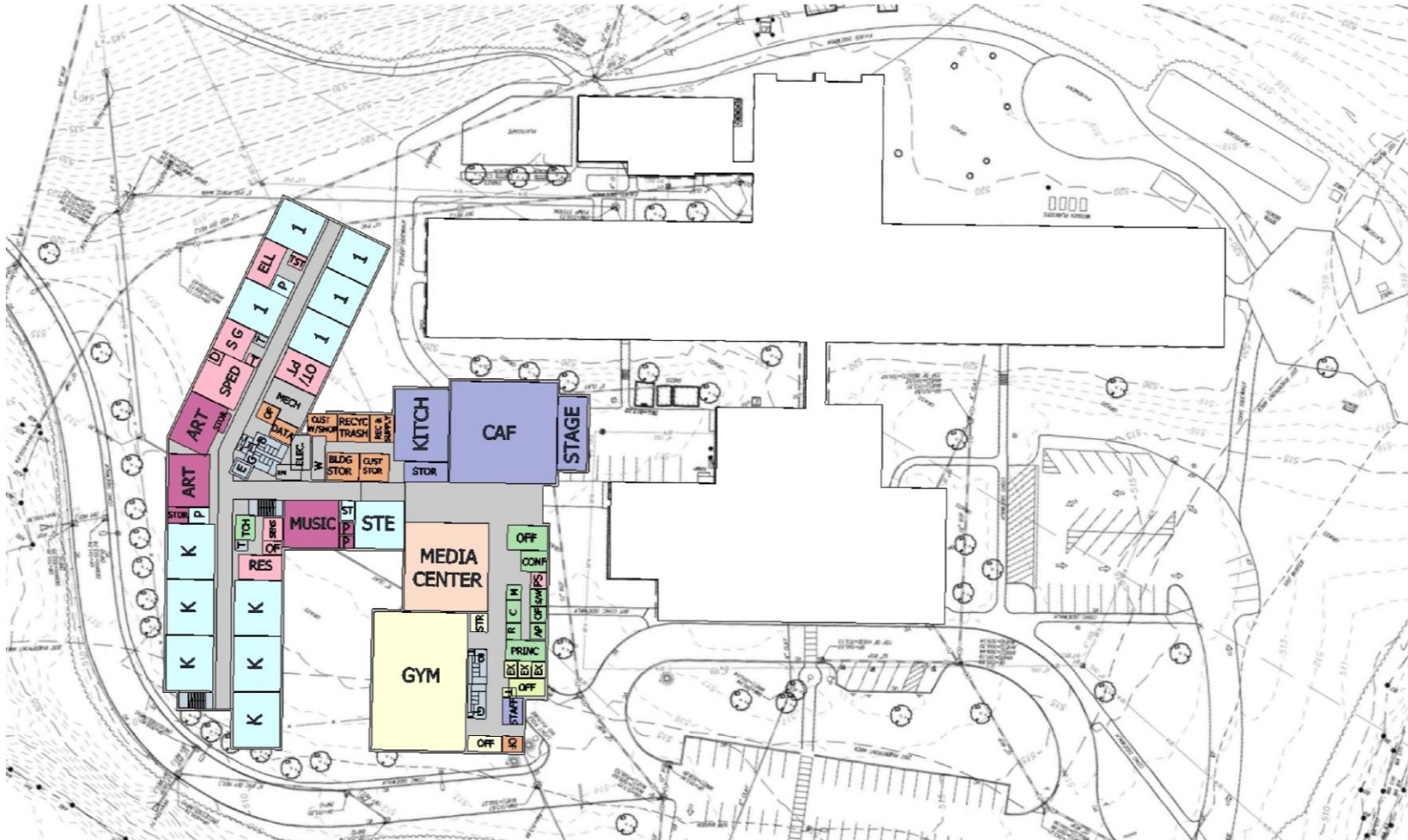
# Option N2- Preliminary Feedback



- Similar notes from the N1 scheme
- The loops will remain similar, although drives around the building might change depending on the location of the cafeteria and gym
- This scheme, like any other scheme, will have the ability to provide access to the cafeteria and the gym after hours while closing off the rest of the school.

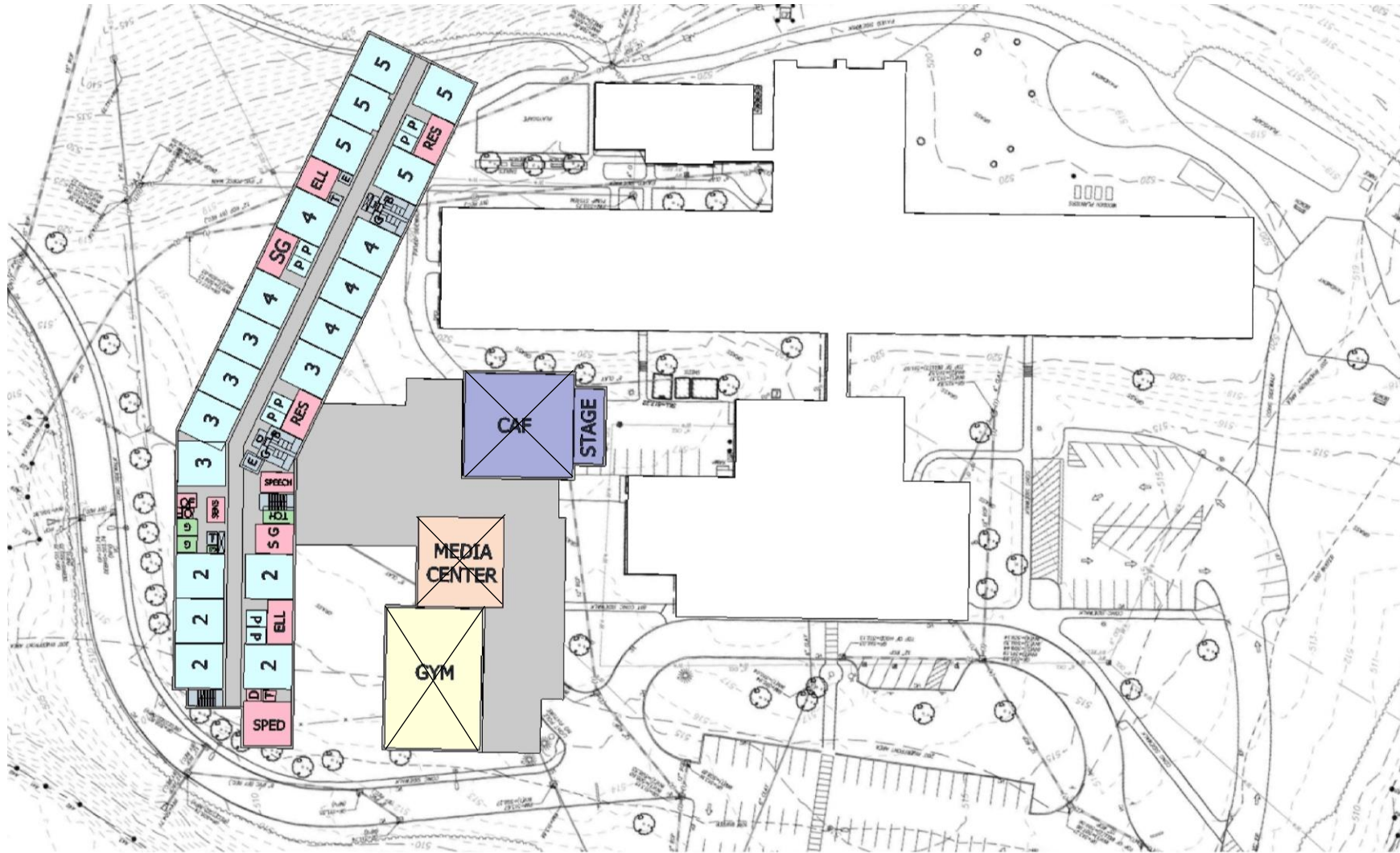
Option N2- First Floor and Site

# Option N2- Staff and Working Group Feedback



- Teachers and Working group preferred the location of the cafeteria
- Gym, Art, and STEM as being co-located seemed ideal, although music room can be located near the Cafeteria
- Kindergarten teachers preferred Media Center on the first floor, so the students don't have to travel upstairs
- This option scored high for the kindergarten teachers

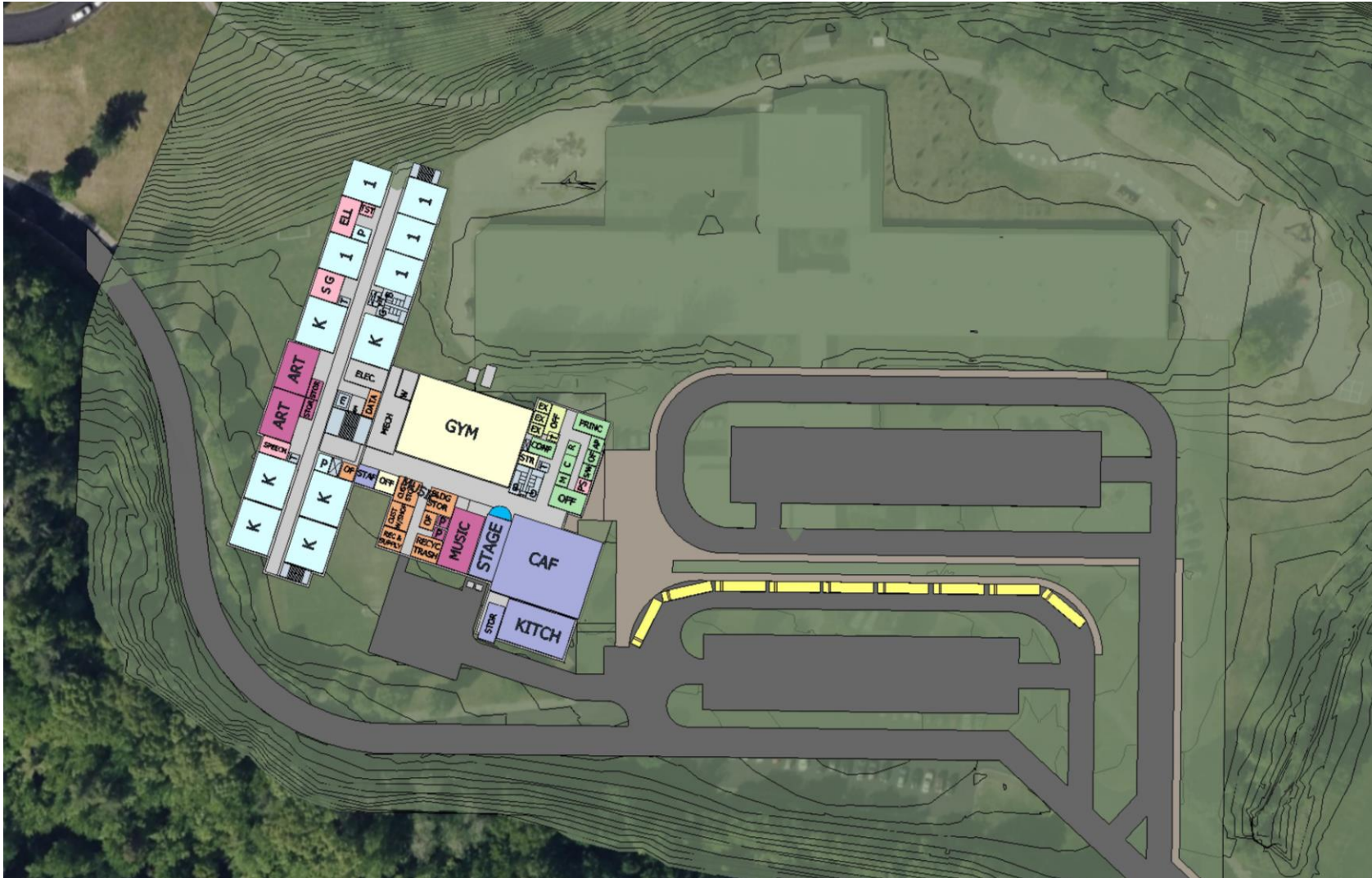
# Option N2- Staff and Working Group Feedback



- Options should consider location of the Teacher's workrooms being smaller but spread to the different wings for ease of use
- Concern was brought up to have the Media Center near the gym due to noise
- Noise concerns were brought up for the music room, Media Center, cafeteria and gym

Option N2- Second Floor Plan

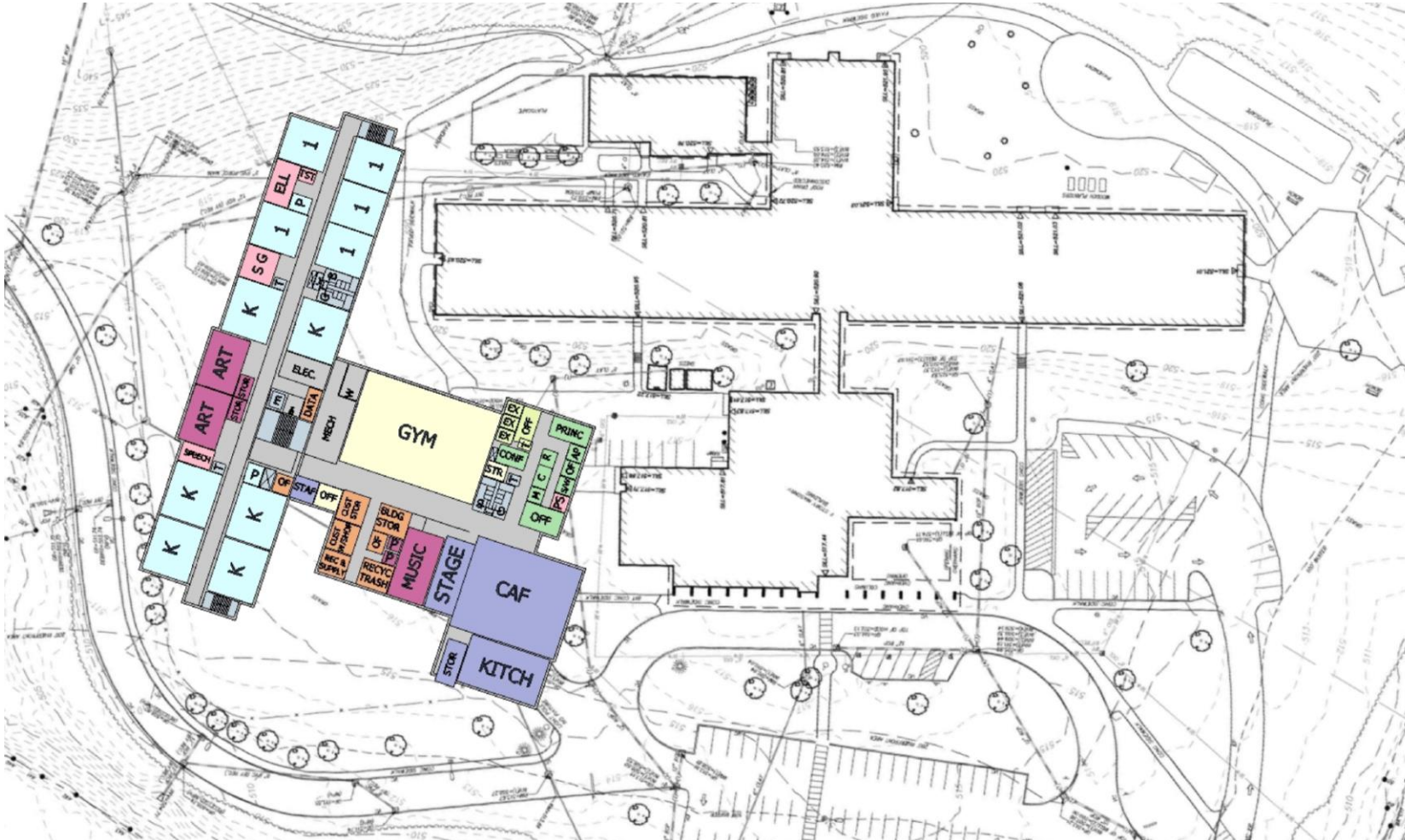
# Option N4- Preliminary Feedback



- Scheme will be estimated as part of the PSR
- Most of the teacher groups did not comment on this scheme.

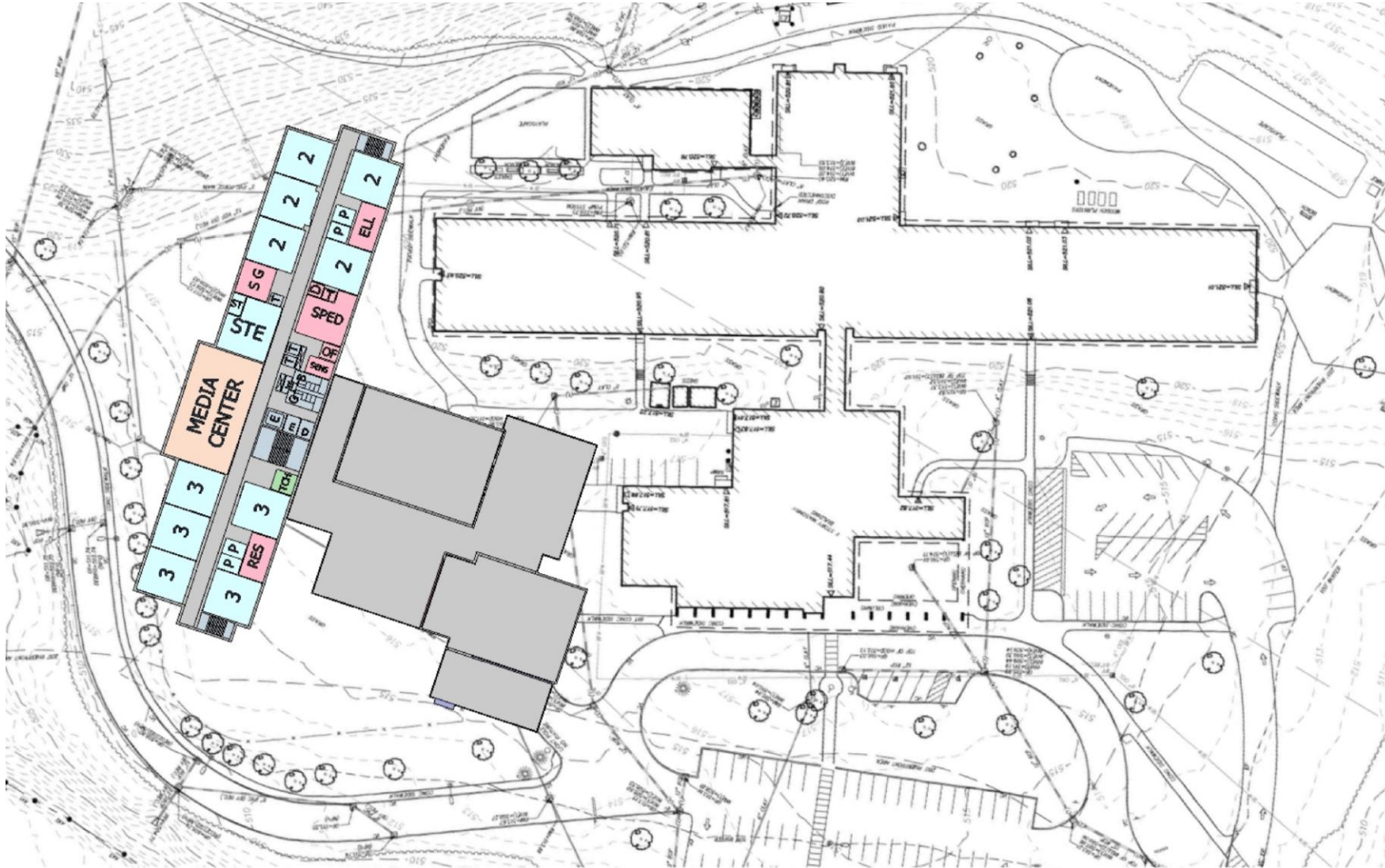
Option N4- First Floor and Site

# Option N4- Staff and Working Group Feedback



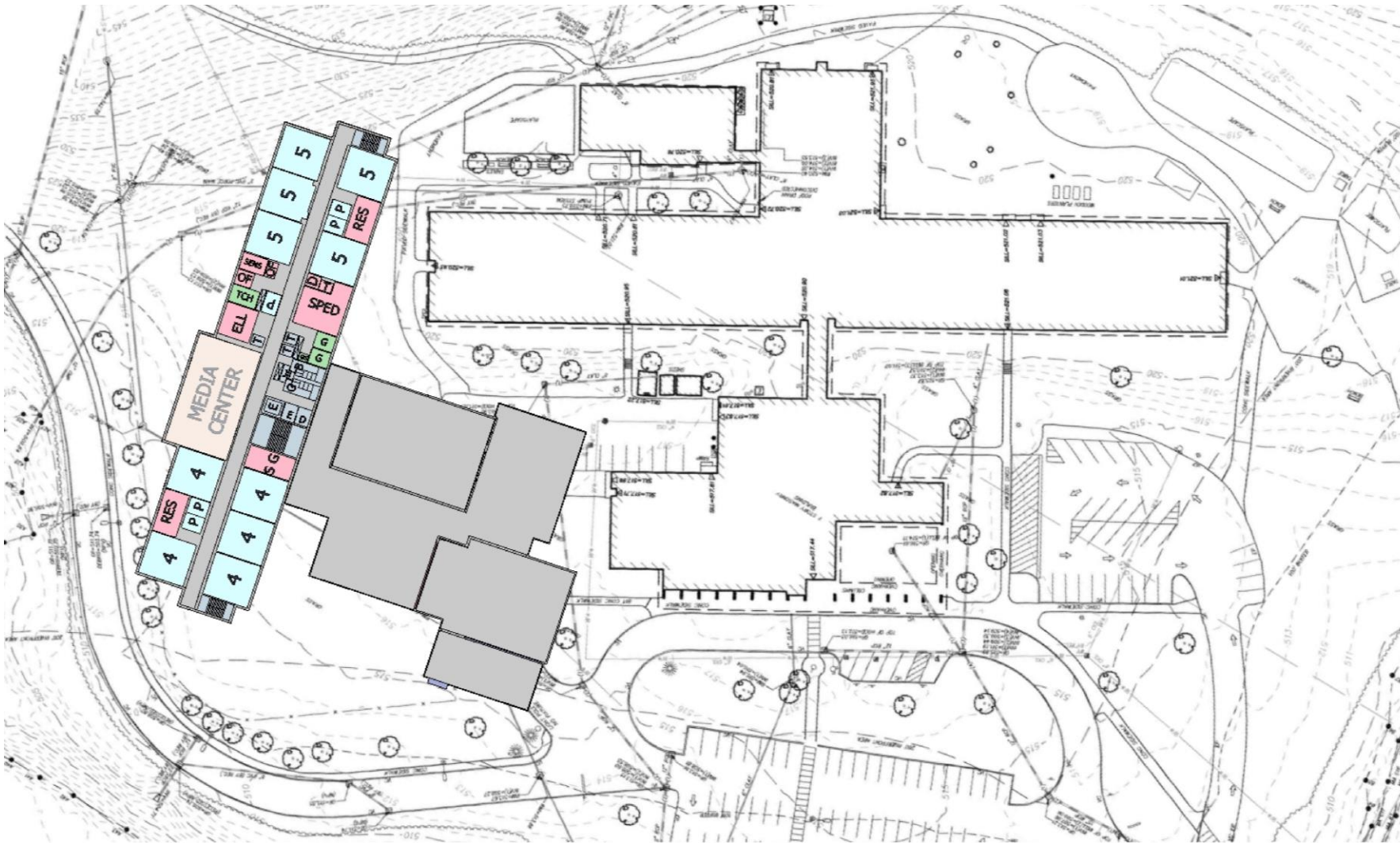
- Most teachers and educators disliked the 3-story scheme
- Working Group notes this does not match the Educational Program for Fall Brook Elementary
- Students will have to go up and down the stairs several times a day
- Fifth grade teachers are the only ones that preferred being on the third floor

# Option N4- Staff and Working Group Feedback



Option N4- Second Floor Plan

# Option N4- Staff and Working Group Feedback



Option N4- Third Floor Plan

# Exploratory Work

- Geotechnical Engineer and Geoenvironmental will start Monday June 24<sup>th</sup> for two days to do site borings
- Material samplings will be taken of the masonry and roof after July 1<sup>st</sup>-
- Hydrant Flow Test - Date TBD

# Questions